

THE GLOBAL INITIATIVE
NETWORK OF EXPERTS

ONBOARDING DOCUMENT FOR NETWORK MEMBERS



**GLOBAL
INITIATIVE**
NETWORK OF EXPERTS

CONTENTS

What is the GI-TOC Network of Experts?	3
Mission and purpose	3
Growth of members by region of origin (as of December 2020)	4
A Network of Experts: what does it mean?	4
Governance of the GI-TOC Network of Experts	4
The Board: purpose, role and relationship with the Network	5
Membership: an overview	6
How to become a member and what to expect	6
Qualifications	6
Nomination procedure	7
Opportunities for engagement with core staff and within the Network	8

WHAT IS THE GI-TOC NETWORK OF EXPERTS?

Debates on transnational organized crime and illicit markets have become increasingly complex, crossing multiple sectors and requiring a wide array of expertise to understand and respond to them. The Global Initiative Network (GIN) began with the GI-TOC 27 founding members, and has been evolving organically since 2011, as has its level of diversity.

The Network makes the GI-TOC more than just another think tank in a crowded space. It was created with a view to promote and support relevant specialists willing to make a difference in a challenging environment. Likewise, the expertise brought by GIN members carries the values of the GI-TOC beyond geographic and virtual borders. It is a multi-disciplinary group, composed of over 530 national and international experts, such as policymakers, law-enforcement specialists, academics, members of non-governmental organizations, investigative journalists and businesspeople who are involved in analyzing or countering transnational organized crime.

MISSION AND PURPOSE

The GIN is the key resource body of the GI-TOC, providing a valuable platform for exchanging knowledge, expertise and advice. It serves as a forum for influence, collaboration and coordination. This is a shared space, where frank debate can take place, where experiences can be shared, connections can be developed across institutional lines and support can be sought by all affected by the impact of organized crime.

A Network of Experts: What does it mean?

We believe that the solution to organized criminal activities lies in the mobilization of people and their expertise. Our Network is made up of selected leading experts in their field who help us develop innovative solutions, formulate sound recommendations and create effective tools to curb transnational organized crime dynamics worldwide.

As an expert group, it is also a unique opportunity to connect with specialists from various cultural and professional backgrounds, working towards the same goal with different approaches and methods. In this respect, the GIN provides a platform for global experts to address gaps or emerging issues, share best practices and lessons learned, widen their professional network and bring their own research to the fore.

BRING TOGETHER

People committed to fighting organized crime who come from different backgrounds and interests

OPPORTUNITY

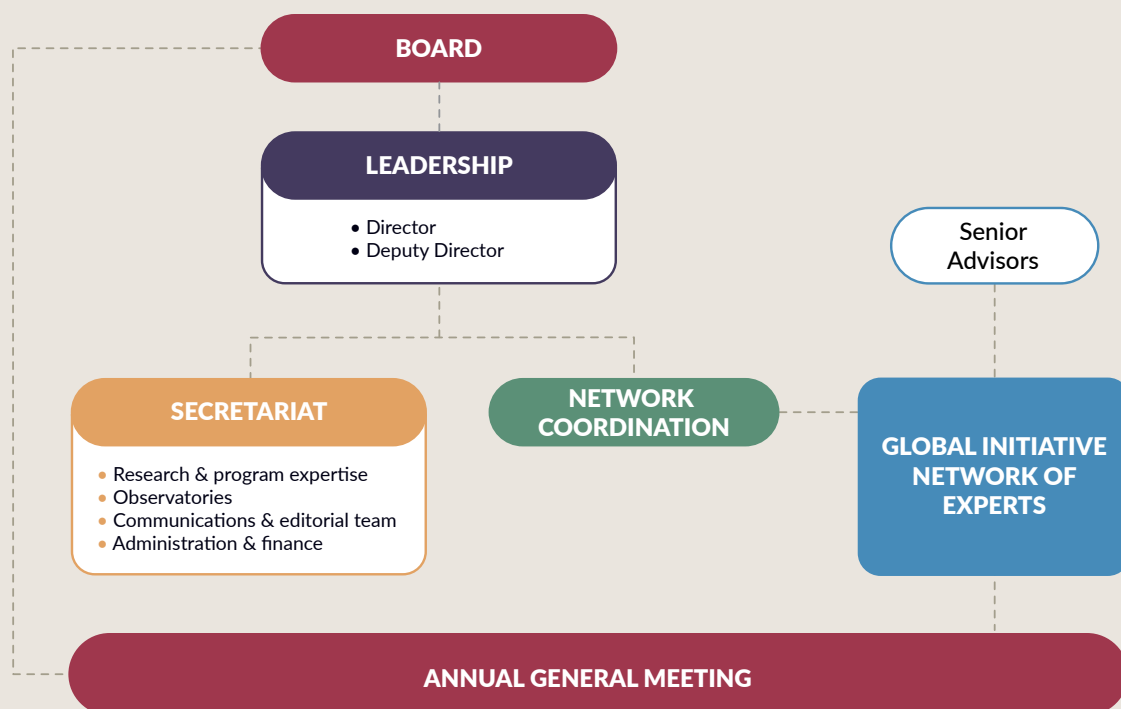
To engage with one another in a trusted, safe space

FACILITATE

The kinds of debates that would help them respond more effectively by drawing from their own work and mandates

GOVERNANCE OF THE GI-TOC NETWORK OF EXPERTS

THE NETWORK IN THE ORGANIZATION'S STRUCTURE



The Board:

Purpose, role and relationship with the Network

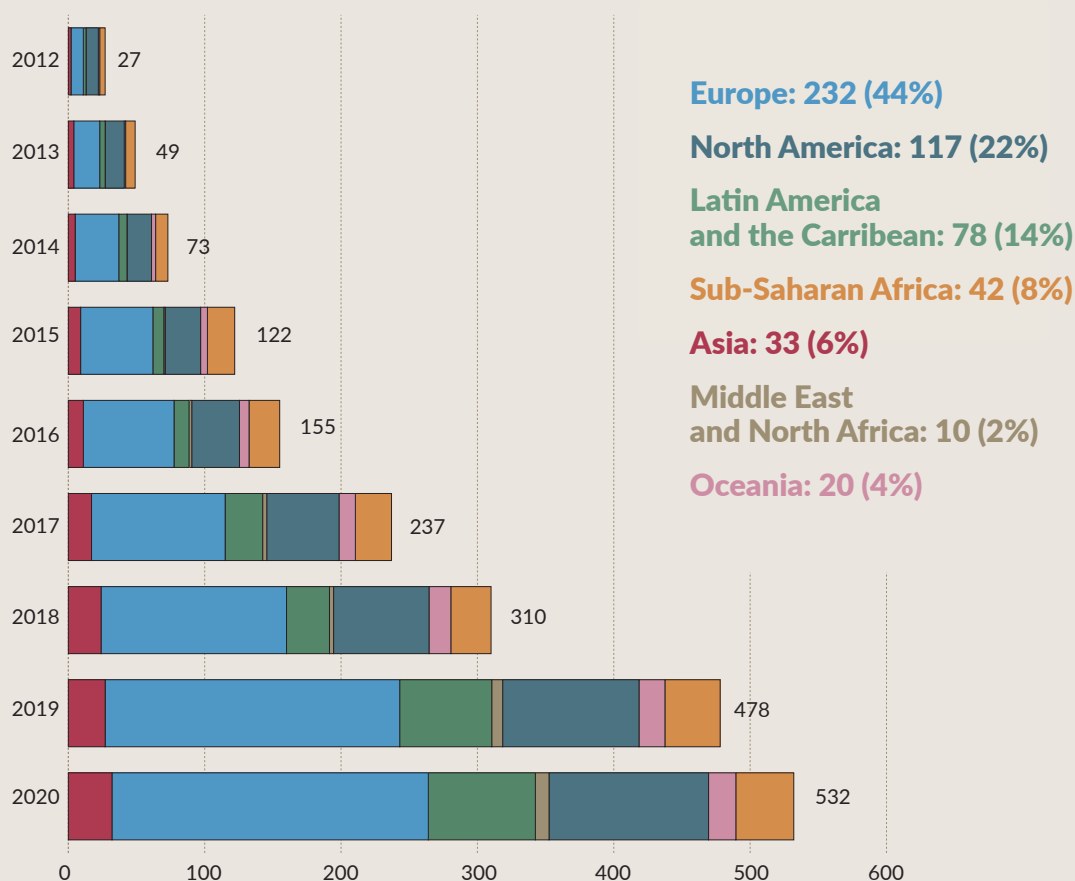
Along with the Board, which has fiduciary oversight and provides advisory functions, the Network, which convenes once a year during the Annual General Meeting, is the organization's highest authority. The Network has the authority to appoint members of the Board and to appoint a select number of its own members to the Board to represent the Network. The GI-TOC's Board is crucial to the management and running of the organization. The GI-TOC has striven to achieve a gender and regional balance on the Board.

Currently, there are four positions on the Board that serve the specific purpose of representing the Network. These are now occupied by [Rodrigo Avila](#), [Nick Lewis](#), [Nirmal Ghosh](#) and [François Mathieu](#).

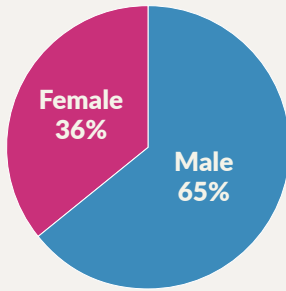
MEMBERSHIP: AN OVERVIEW

Becoming a member of the Global Initiative Network of Experts means committing to a partnership based on trust and mutual gain. The GIN membership adds value to the work of its members through the promotion and support of their work and in providing a high-level, safe space for them to thrive. In doing so, it catalyzes strengthened global responses to the challenges of organized crime. GIN members are a vital resource not only to the GI-TOC's core mandate, but also to global efforts to combat transnational organized crime.

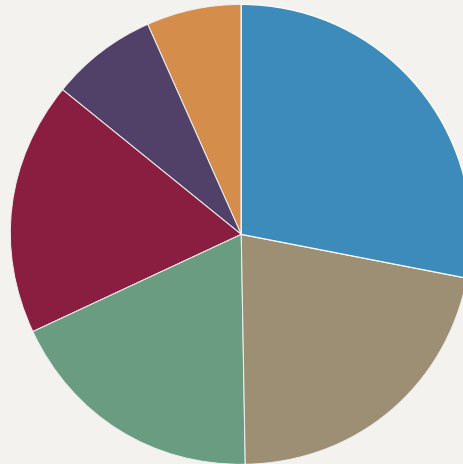
GROWTH OF MEMBERS BY REGION OF ORIGIN (AS OF DECEMBER 2020)



GENDER



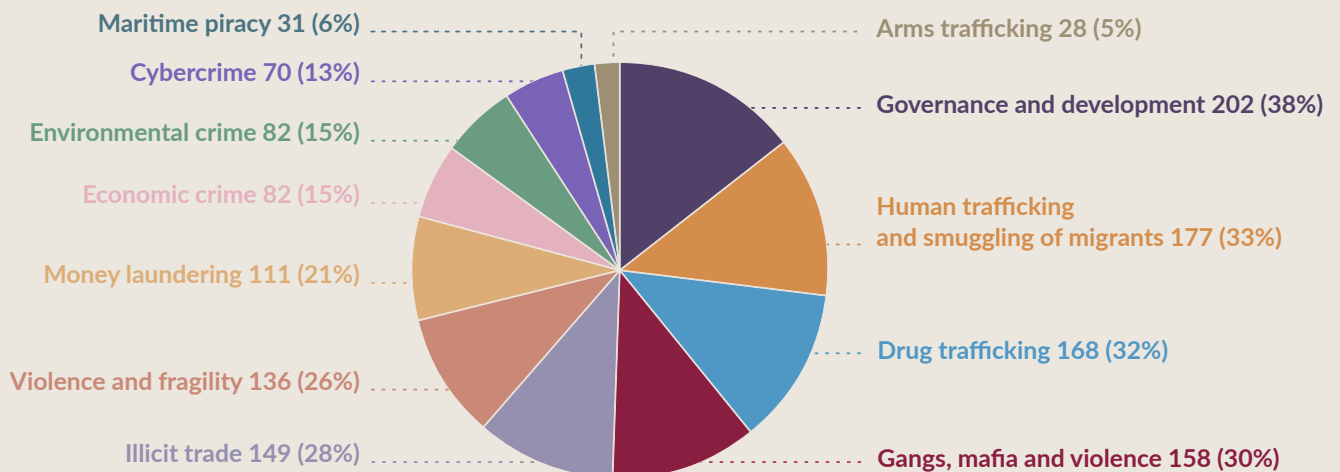
PROFESSIONAL GROUP



Members of the GIN do not represent their organizations, but join in their personal capacity, and it is important to note that individual members' views do not necessarily reflect the views of the GI-TOC or those of the Network as a whole.

Research and academia: 198 (37%)
Government and Law enforcement: 154 (28%)
Independent experts: 129 (24%)
Civil society: 126 (24%)
Private sector: 52 (10%)
UN/Regional organisations: 46 (9%)

TOC EXPERTISE



HOW TO BECOME A MEMBER AND WHAT TO EXPECT

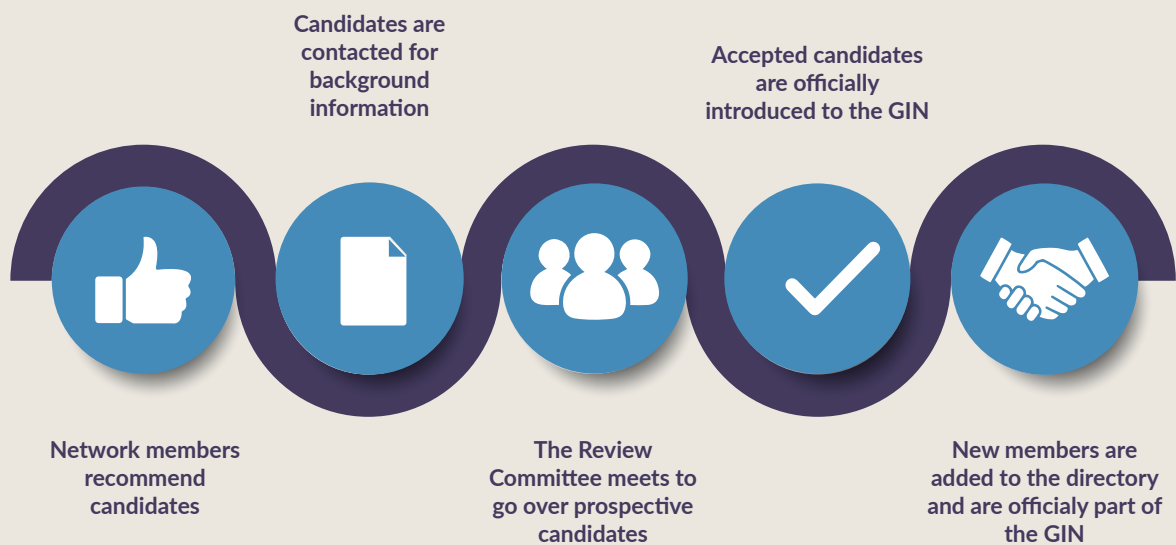
Qualifications

To become part of the GIN, a prospective member should:

- Belong to one or more of the professional groups described in the above infographic 'TOC Expertise'.
- Be at the forefront of current debates in their field.
- Comply with the GI-TOC's code of ethics.
- Be willing to actively engage in GI-TOC activities either publicly or anonymously.
- Have proved expertise in matters relating to transnational organized crime (TOC); or have proved expertise in the various disciplines and activities that are important in understanding or countering TOC (such as a subject matter expert); and have either acquired expertise over a substantial period of time (5–10 years) or demonstrated commitment to acquiring such expertise, in a manner that indicates a capacity for to fully contribute to the purpose of the GI-TOC in due course.

IMPORTANT NOTE: Consultancies and employment opportunities are not part of the Network membership, although they are not incompatible with the GI-TOC operational rules. Please bear in mind, however, that such opportunities are exceptionally considered in specific and appropriate contexts only.

Nomination procedure



Global Initiative Network - Member Information

Welcome to the Global Initiative Against Transnational Organized Crime's Network of Experts!

In order to facilitate better communication and collaboration between you and the Global Initiative (GI-TOC), we would kindly ask you to fill in this Network Member Information Form at your earliest convenience.

Should you wish to have a GI-TOC website profile created (please see here for examples: <https://globalinitiative.net/network/>), please indicate this in the respective section as well as kindly provide the relevant information such as a short bio and publications.

Many thanks for your cooperation and support!



**GLOBAL
INITIATIVE**
NETWORK OF EXPERTS

Next

The process of considering prospective members takes place twice a year – in June and December. Prospective members join the Network upon invitation or recommendation by existing Network members or by the GI-TOC Secretariat. In exceptional cases, experts can also approach the GI-TOC and apply independently. The Membership Review Committee considers the profiles of prospective members after a background check based on our code of ethics. Those who are approved by the committee are then invited by the director to become GIN members.

Upon joining the Network, every member is asked to complete a [Member Information Form](#), and update it ([update your current profile](#)) as his or her career evolves. This form is extremely important for us to sort members into relevant groups, and includes sections for members to tell us more about how they would like to engage with Network and GI-TOC activities.

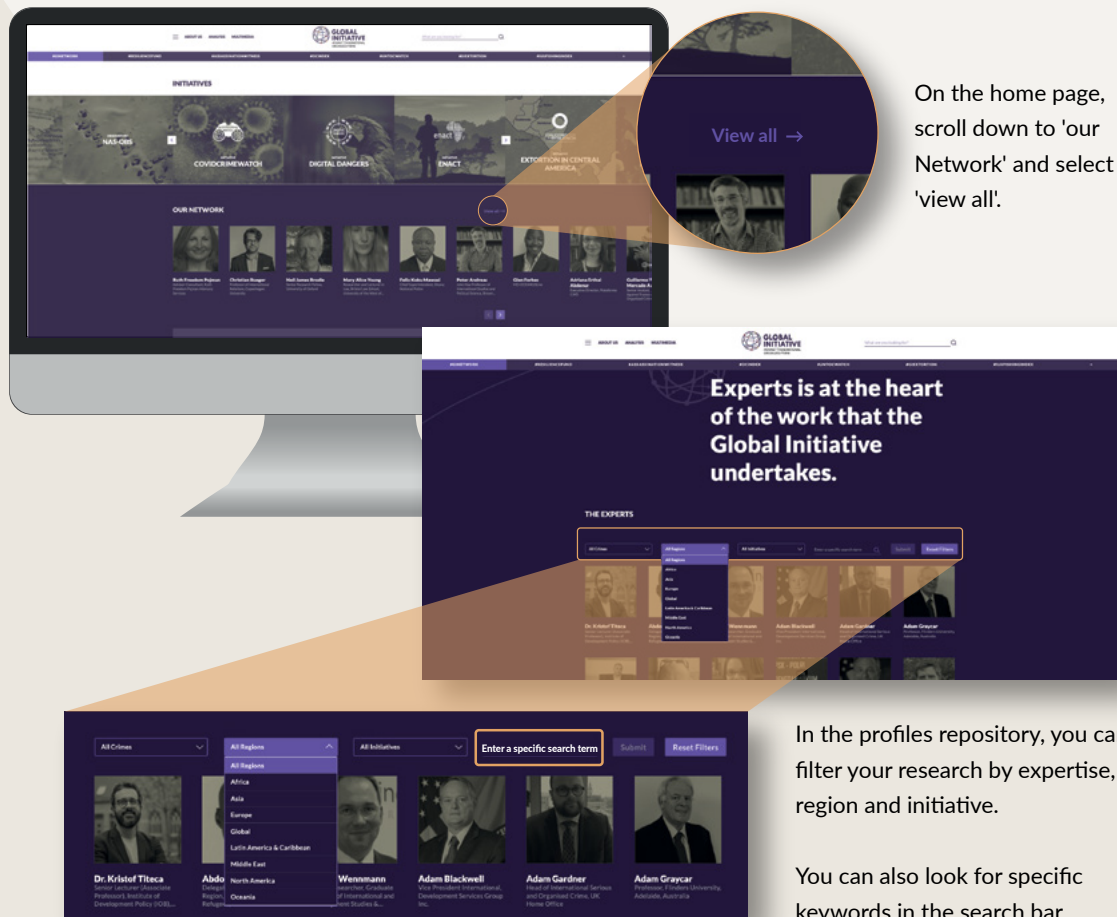
This is also where information for members' online profiles is stored.

Opportunities for engagement with core staff and within the Network

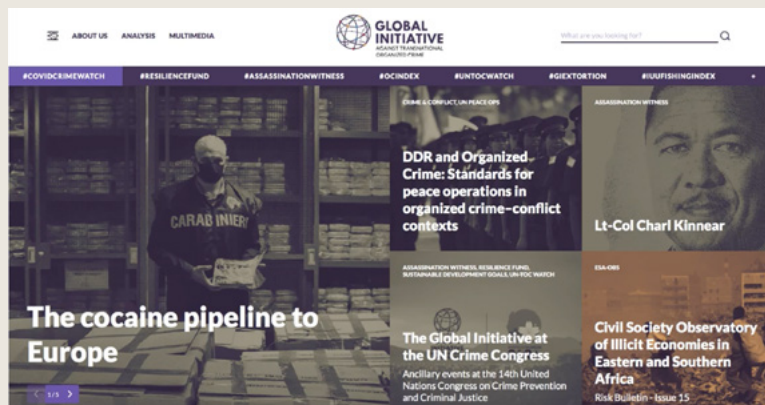
The Network is a supportive, lively community where expertise, knowledge and information are shared in a mutually beneficial ecosystem. Our Network Coordination team sees to it that GIN members willing to learn with and from other experts among the GIN or the GI-TOC core staff can seek consultation on specific topics that fall outside of their knowledge base, contribute to ongoing projects linked to their area of expertise, and promote their work through GI-TOC advocacy and communication channels.

THE GI-TOC WEBSITE: HOW TO SEARCH?

Members of the GIN are encouraged to engage with one another, and with GI-TOC core staff. Opportunities for collaborative work can come from the GI-TOC and/or at members' request. On the [Global Initiative website](#), you can search for [GI-TOC Network members](#) and [GI-TOC Secretariat profiles](#) to have a better idea of people's backgrounds and current work. Here is how:



Here is a step-by-step video of how to look for experts and GI-TOC colleagues online.



Opportunities to share your work and engage with our daily activities

There are numerous ways in which you can engage with GI-TOC core activities, share your work and exchange ideas with the GI-TOC community, namely:

- Bulletins and Virtual Group Discussions (VGDs) (please visit the [GIN Resource Centre](#) for more information)
- Participating in the Annual General Meeting (AGM)
- Writing blogs on a topic of choice based on your area of expertise, to be featured on the GI-TOC website
- Being included in panels for webinars and conferences as well as participating in commentaries
- Upon request by the GI-TOC Secretariat, promoting or representing the organization at conferences and meetings
- Participating in GI-TOC initiated interviews
- Providing inputs into research and analysis
- Participating in one of the GI-TOC projects and initiatives
- Joining peer-review groups for GI-TOC's research publications

Regular activities of the GIN include enhanced professional engagement with peers through monthly conferences called Virtual Group Discussions; Network members can access the GI-TOC's online resources, podcasts and more. We also publish a quarterly bulletin in English, Spanish and French for Network members.

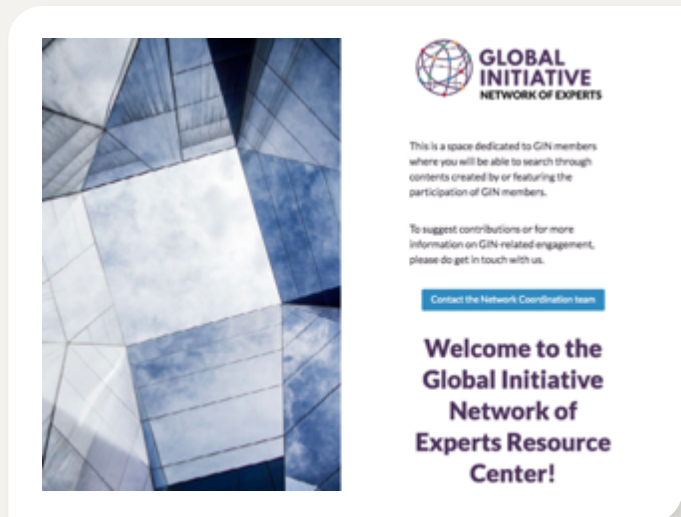


MONTHLY
virtual discussions


QUARTERLY
bulletins

MONTHLY
podcasts

In order for you to keep track of the work of GIN members and GI-TOC activities, and to suggest ideas for further engagement, we have created the [GIN Resource Centre](#), where you will be able to find all past, ongoing and forthcoming activities of the GIN. This includes monthly bulletins, Virtual Group Discussions, programmes, presentations, podcasts and interviews.



NETWORK COORDINATION



THE NETWORK COORDINATION TEAM

To reach out to Network members and more generally for information, suggestions or concerns regarding GIN activities and engagement, please do not hesitate to contact the Network coordination team at network@globalinitiative.net



◀ **Livia Wagner**
Network coordinator



Iris Oustinoff ▶
Network coordination Officer

ANNEXES

- [Communications package](#): A comprehensive source of information featuring GIN statistics over the years, key strategic objectives, as well as speaking notes and social media tips. Also available in [Spanish](#) and [French](#).
- [Approach and ethics](#): The code of ethics that all GIN members are required to sign and comply with throughout their membership.
- [One-pager](#): A general overview of the GIN and its members.



**GLOBAL
INITIATIVE**
NETWORK OF EXPERTS

Geneva

Avenue de France, 23
Geneva, CH-1202
Switzerland

Vienna

Schwarzenbergplatz 1
1010 Vienna
Austria

Cape Town

2nd Floor The Armoury
Buchanan Square
160 Sir Lowry Road
Woodstock
Cape Town 7925

Malta

SOHO Office
Edge Water Business Complex
Triq Elija Zammit San Ġiljan
STJ 3120 Malta